

MPS Catalog Number:  
Date:

S1 40 90 042 MA AL 027  
01/23/2014

**END FITTINGS**

Tower End Fitting: Y-Clevis (Forged Steel)  
Line End Fitting: Eye (Forged Steel)

**MATERIAL**

Corona Ring (Tower): None  
Corona Ring (Line): 8" Corona Ring  
Corona Rings are recommended for applications of 230 kV and above  
Number of Sheds: 13 large 14 standard  
Rod Diameter: 16 mm  
Weight Estimate: 12.4 lbs 5.6 kg

**DIMENSIONAL VALUES**

Section Length (L): 55.6 in 1,415 mm  
Rubber Length (X): 42.4 in 1,077 mm  
Standard Shed Height (P1): 1.5 in 38 mm  
Large Shed Height (P2): 2 in 51 mm  
Projection Ratio (S/P): - 1.5  
Shed Spacing (S): 3 in 76 mm  
Dry Arc Distance: 42.2 in 1,072 mm  
Leakage Distance: 121.8 in 3,094 mm

**ELECTRICAL VALUES**

60 Hz Dry Flashover:	416 kV	Min. Withstand:	386 kV
60 Hz Wet Flashover:	374 kV	Min. Withstand:	325 kV
Pos. Critical Impulse Flashover:	716 kV	Min. Withstand:	620 kV
Neg. Critical Impulse Flashover:	761 kV	Min. Withstand:	666 kV

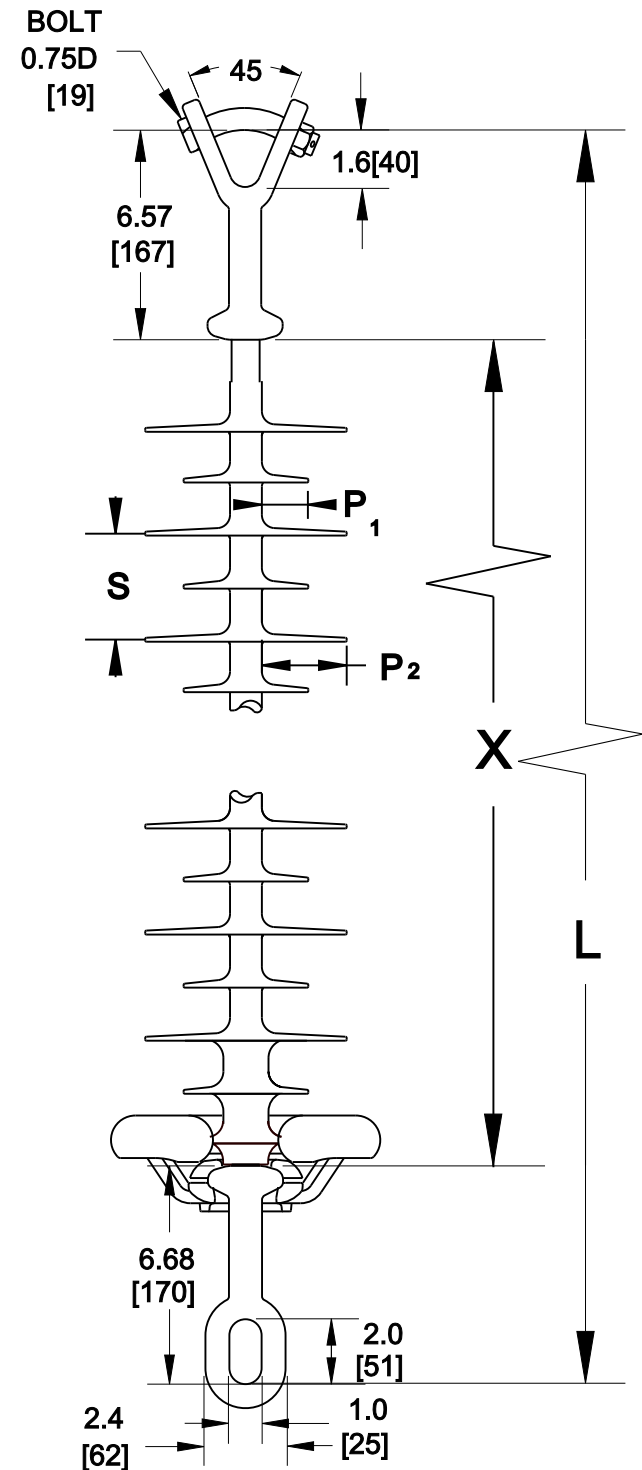
**MECHANICAL VALUES**

Specified Mech. Load (SML):	25,000 lbs	111.2 kN
Routine Test Load (RTL):	12,500 lbs	55.6 kN

This drawing contains confidential information that is property of MacLean Power L.L.C ('MacLean'). Use of MacLean's confidential information without MacLean's express written consent is strictly prohibited and may expose you to legal liability. If you believe that you received this material in error, please destroy it or return it to 'MacLean Power, L.L.C., 7801 Park Place Rd, York, SC, 29745, USA.'

Dimensions: inches [millimeters]

Note: Drawing not actual depiction of insulator appearance



Silicone Rubber Sheath & Sheds  
Complies with applicable ANSI and IEC standards.